

Norwegian Institute for Nature Research

TEAMWORK

ENTHUSIASM

INTEGRITY

QUALITY

Cooperation and expertise for a sustainable future

The **Norwegian Institute for Nature Research (NINA)** is Norway's leading institution for applied ecological research and a key research institute in Europe. NINA perform short and long-term research and commissioned applied research to facilitate the implementation of international conventions, decision-support systems, and management regulations. We also perform consultancies for industry and management authorities, and we work to enhance public awareness and to promote conflict resolution.

NINA has well equipped laboratories and research facilities at nine locations in Norway. The institute offers broad-based ecological expertise covering the genetic, population, species, ecosystem and landscape level, in terrestrial, freshwater, and coastal marine environments.

NINA's activities are focused on environmental research emphasizing the interaction between human society, natural resources and biodiversity. The institute's research in the natural and social sciences, and its collaborative networks in Norway and abroad, enable it to provide management agencies, industry and civil society with top-notch information and advisory services on all aspects of natural resource management and the sustainable use of renewable resources.

NINA has a long tradition of working in close cooperation with its clients and providing key information to decision-makers. NINA's goal is to promote excellence among its clients, and generate scientific products of high quality and relevance. NINA attaches great importance to scientific integrity and emphasizes objectivity, independence and quality in research.

NINA is a national and international centre of expertise in the field of nature research

NINA's areas of activities:

- Land use and nature management, including landscape analysis in the coastal zone
- Harvesting and sustainable use of fish and game stocks
- Community development and local participation in natural resource management
- Commercial development related to biological resources
- Environmental impacts of agriculture and aquaculture
- Vegetation and wildlife surveys
- Monitoring and time-series analyses regarding natural resources
- Red-list evaluations and conservation planning
- Analysis and resolution of conflicts related to utilization of natural resources and protection of threatened species
- Environmental databases; development, operation, use, and public information
- Pollution impact analysis and monitoring
- Environmental impact assessments connected to human encroachments, infrastructure development and land-use changes

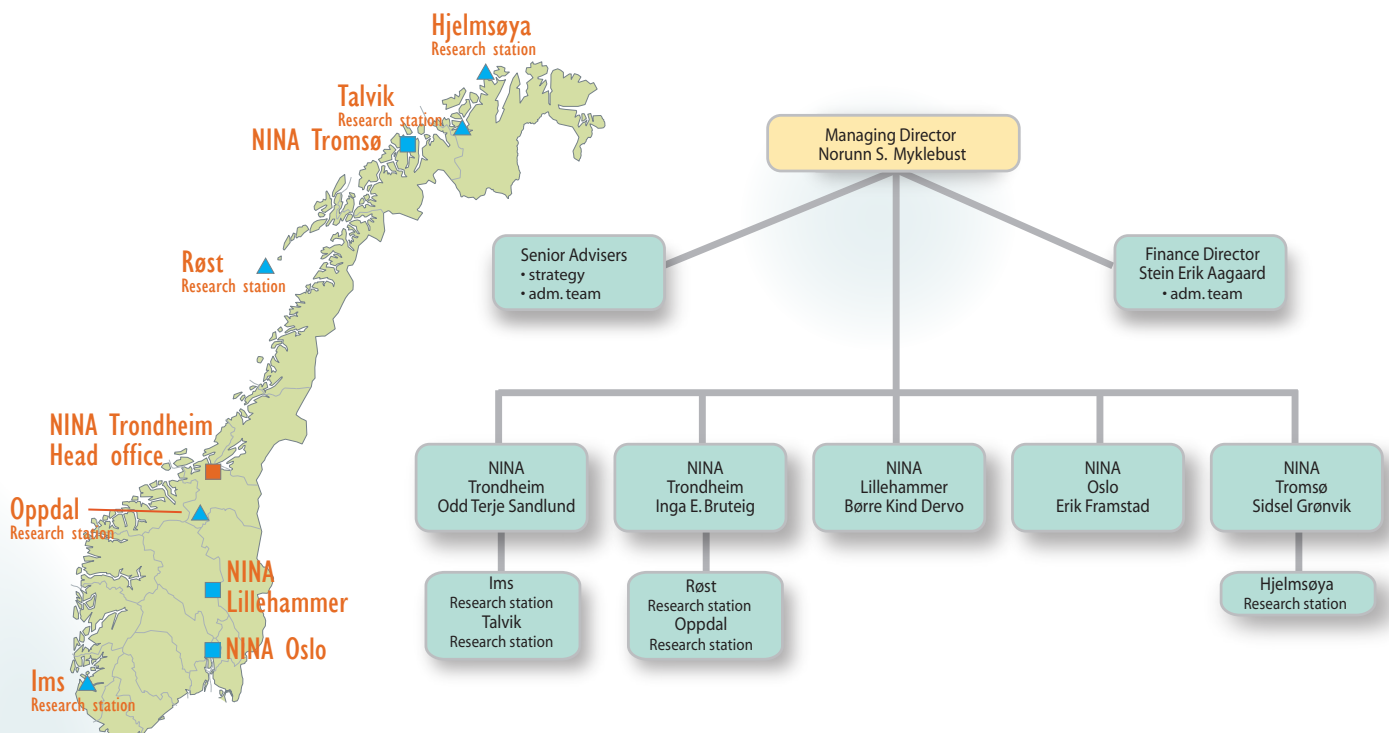
NINA's services:

- Research
- Dissemination of research results
- Environmental impact assessments
- Environmental monitoring and status reports
- Consultancies and evaluations
- Courses and training

NINA's key statistics for 2007:

| | |
|-------------------------|---|
| Number of employees: | 161 |
| Turnover: | 22 mill. EUR |
| Number of publications: | 139 scientific papers 115 reports in our own series 198 other written reports |

NINA's organisation



NINA was established in 1988. The main office is in Trondheim, and additional offices are established in Oslo, Lillehammer and Tromsø. NINA also owns and runs research stations for fish at Ims and Talvik, for seabirds at Røst and Hjelmsøya, and a breeding farm for arctic fox at Oppdal.

Contact information

NINA head office

Postal address:
NO-7485 Trondheim
NORWAY
Visiting address:
Tungasletta 2,
NO-7047 Trondheim
Phone: +47 73 80 14 00
Telefax: +47 73 80 14 01

NINA Lillehammer

Fakkeltgården,
NO-2624 Lillehammer
NORWAY
Phone: +47 73 80 14 00
Telefax: +47 61 22 22 15

NINA Oslo

Gaustadalléen 21,
NO-0349 Oslo
NORWAY
Phone: +47 73 80 14 00
Telefax: +47 22 60 04 24

NINA Tromsø

Postal address: NO-9296 Tromsø
NORWAY
Visiting address:
Hjalmar Johansens gate 14
NO-9007 Tromsø
Phone: +47 77 75 04 00
Telefax: +47 77 75 04 0

NINA Research Station

NO-4308 Sandnes
NORWAY
Phone: +47 51 67 24 70
Telefax: +47 51 67 24 71